

PAROS Proposed Constitution

A/Prof Marcus Ong Eng Hock
*Consultant, Director of Research and Senior Medical Scientist
Dept of Emergency Medicine, Singapore General Hospital
Assoc Professor, Office of Clinical Sciences
Duke-NUS Graduate Medical School, Singapore
Consultant, Ministry of Health, Hospital Services Division*



Overview

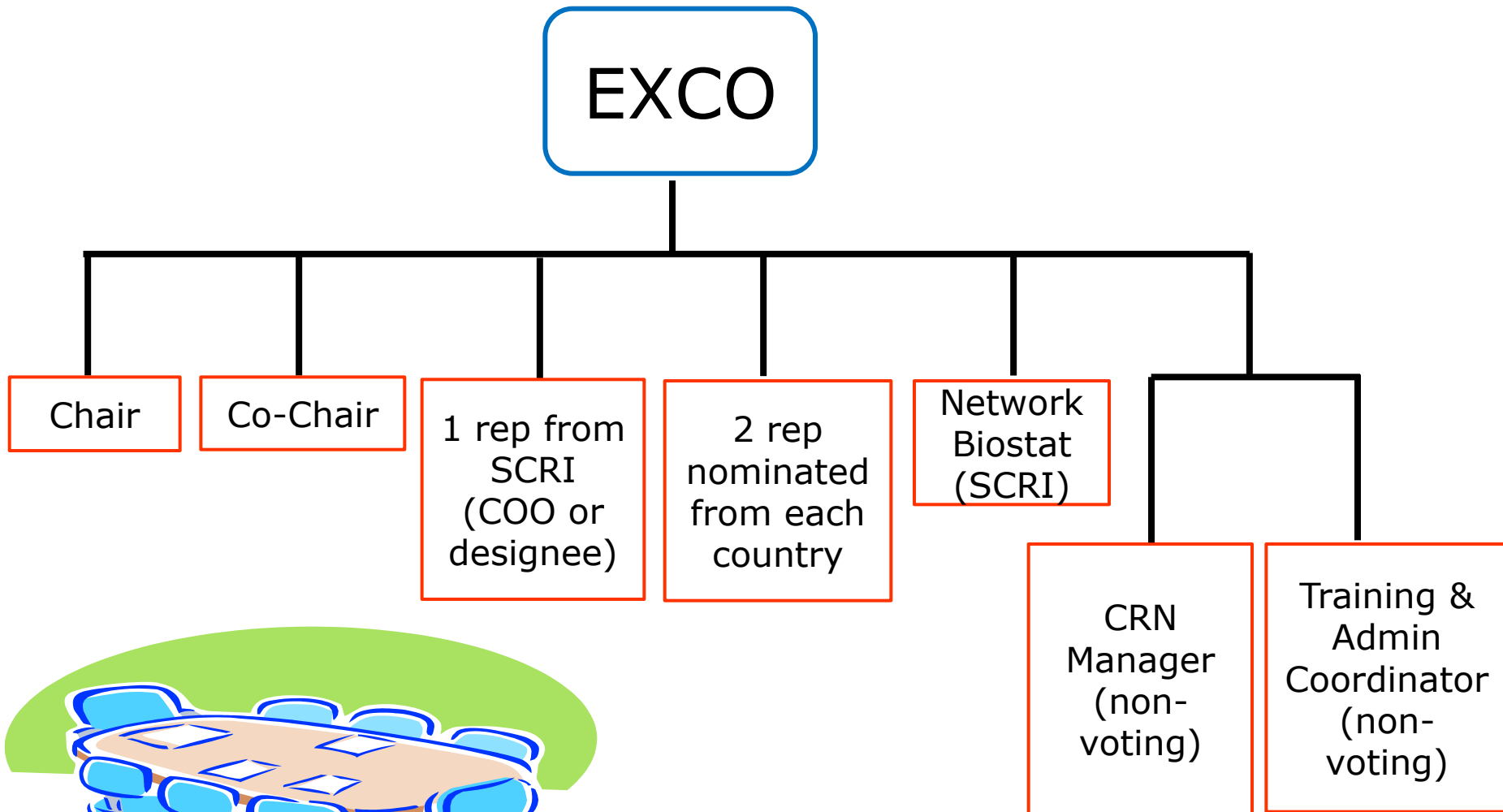
1. Governance Of PAROS
2. Constitution Of PAROS
3. Publication Committee (PC)
4. Operation Committee (OC)
5. Network Memberships
 - ➔ Type of Memberships

Governance Of PAROS

PAROS Executive Committee (EXCO) is formed to:

- ❖ Manage the PAROS clinical research network (CRN)
- ❖ Provide overall direction
- ❖ Decision-maker on all major issues pertaining to:
 - ➔ Acceptance management
 - ➔ Budgeting
 - ➔ Conduct
 - ➔ Authorship
 - ➔ Publication of trials or other CRN studies

Constitution Of PAROS



Constitution Of PAROS

- Recognized disease experts in the Asia Pacific
- Established publication records
- Expertise in the conduct of multi-site trials

Chair & Co-Chair

May or may not also function as the Study Principal Investigator (PI) and Co-PI for particular studies.

- Co-Chair will be nominated to succeed the Chair position after 3 years.
- New Co-Chair elected every 3 years.

Constitution of PAROS

The PAROS CRN will have the autonomy to decide to rotate persons who serve as Executive Committee, Chair or Co-Chair (i.e. Network PI and Co-PI) for a 3 year term.

Constitution of PAROS

The PAROS Executive Committee will be served by two additional sub committees:

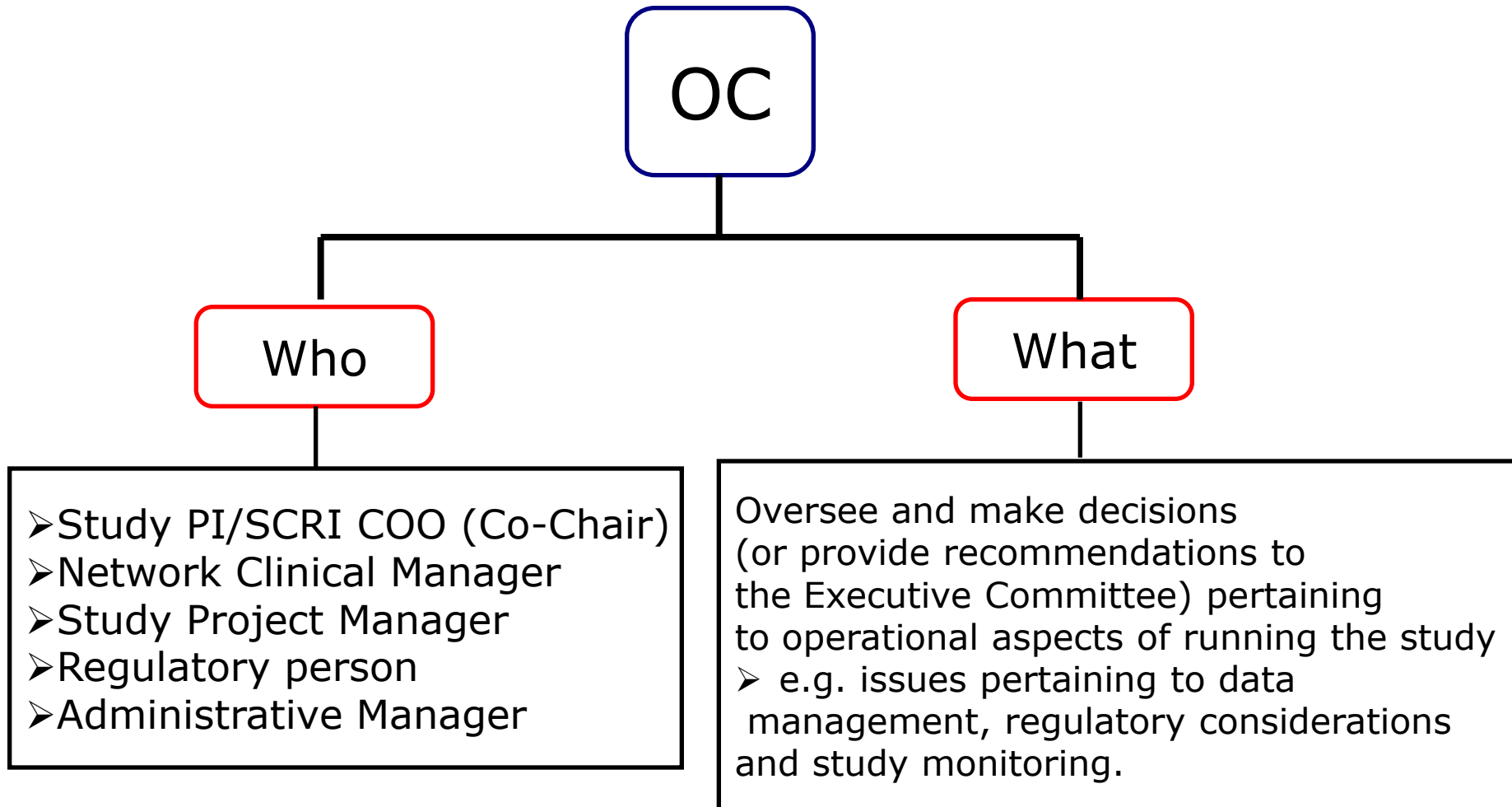
- ❖ Publication Committee
- ❖ Operations Committee



Publication Committee (PC)

- ❖ Network PC will be designated for each study by the EXCO
- ❖ Have 6-8 members including the Study Biostatistician
- ❖ Chaired by the Study PI or Co-PI and Co-Chaired by the Study Biostatistician
- ❖ Oversees reviews, provides written critiques, and gives final approval for all journal article submissions from the study

Operation Committee (OC)



Network Membership

- ❖ Membership will be defined by its Executive Committee on the basis of participation which will be reviewed annually.
- ❖ Participation refers to:
 - ➔ Contribution of patients
 - ➔ Contributions to study protocol
 - ➔ Other inputs to the study/network
 - ➔ Respond to queries within 2 weeks

Type of Memberships

Memberships

```
graph TD; A[Memberships] --> B[Ordinary]; A --> C[Associate]; B --> D["❖ Any clinician who has enrolled three or more patients into any clinical trial conducted by the PAROS CRN.  
❖ Can be invited to attend the General Meeting or Scientific Meetings."]; C --> E["❖ Interested individuals who may be clinicians, para-clinicians, scientific staff or lay individuals.  
❖ Will be kept on a mailing list to receive updates of the activities of the PAROS CRN.  
❖ May be allowed to attend General Meetings or Scientific Meetings of the PAROS CRN subject to the Executive Committee's approval."];
```

Ordinary

- ❖ Any clinician who has enrolled three or more patients into any clinical trial conducted by the PAROS CRN.
- ❖ Can be invited to attend the General Meeting or Scientific Meetings.

Associate

- ❖ Interested individuals who may be clinicians, para-clinicians, scientific staff or lay individuals.
- ❖ Will be kept on a mailing list to receive updates of the activities of the PAROS CRN.
- ❖ May be allowed to attend General Meetings or Scientific Meetings of the PAROS CRN subject to the Executive Committee's approval.



**CONFIRMATION
OF EXCO
MEMBERSHIP**



THANK YOU